



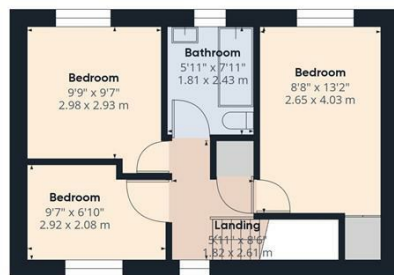
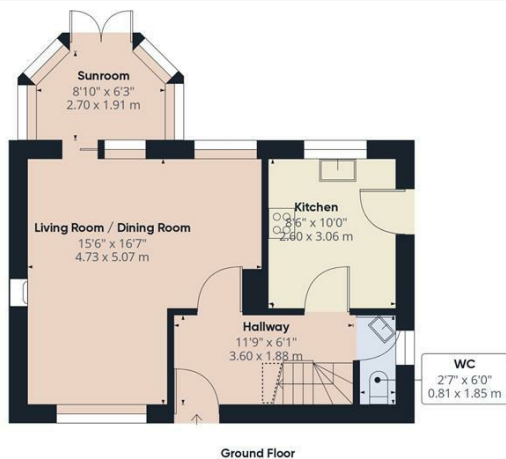
**19 WEBSTER ROAD**  
**AYLESBURY, HP21 7FQ**

**£435,000**  
**FREEHOLD**

Located on this sought after development close to the highly regarded Turnfurlong schools, A FABULOUS THREE BEDROOM DETACHED HOME with GARAGE & PLENTY OF PARKING. \*\*  
Viewing strongly advised \*\*







Approximate total area<sup>(1)</sup>  
840.62 ft<sup>2</sup>  
78.1 m<sup>2</sup>

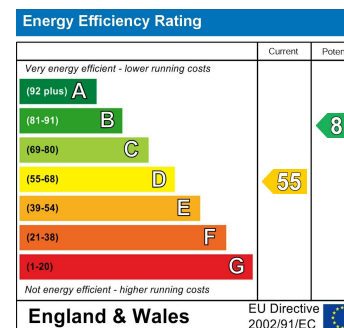
Reduced headroom  
6.56 ft<sup>2</sup>  
0.61 m<sup>2</sup>

(1) Excluding balconies and terraces.

Reduced headroom  
(below 1.5m/4.92ft)

While every attempt has been made to ensure accuracy, all measurements are approximate, not to scale. This floor plan is for illustrative purposes only.

GIRAFFE360



Agents Note: Whilst every care has been taken to prepare these particulars, they are for guidance purposes only. All measurements are approximate and are for general guidance purposes only and whilst every care has been taken to ensure their accuracy, they should not be relied upon and potential buyers/tenants are advised to recheck the measurements

George David & Co  
46 High Street  
Aylesbury  
HP20 1SE

01296 393 393  
info@georgedavid.co.uk  
www.georgedavid.co.uk

